



Lloyd Mann Gardens

This beautiful shady park was developed in the late 1980s and provides a cool retreat for a picnic or travel break. The gardens are named after well-known cane farmer and dedicated community worker Lloyd Mann (1919-1986). Mr Mann's grandfather, William Benjamin Mann, was one of Home Hill's pioneering cane farmers.



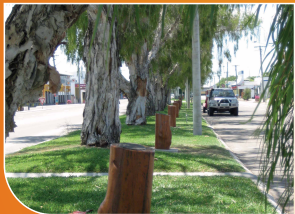
Old Home Hill Courthouse

The first courthouse was established in 1923 in a timber building which had previously served as Jensen's Boot Palace. The building was transported by tractor from the corner of 8th Avenue and 9th Street to the present courthouse site. The current brick building was completed in 1937 at a cost of £4560 (about \$9120). The courthouse was officially closed in 1991 and the building housed the Burdekin Gateway Visitor Information Centre from 2003 to 2006. It is now the home of local radio station Sweet FM 97.1.



Canecutter mural

A tribute to the men who made their living in the canefields. Before the introduction of mechanical cane harvesters in the 1960s, farmers relied upon gangs of canecutters to get their cane to the mill. Hand canecutting was tough work requiring stamina and great skill with a caneknife. This mural was painted by Ayr artist Margaret Redweik.



Pioneer Avenue

This avenue, set under towering melaleuca trees, is an historical tribute to the district's pioneers. Each of the 39 plaques is dedicated to one of the Burdekin's long-established families.

Thanks to the Lower Burdekin Historical Society Inc. for helping to collate the information contained in this brochure.



For further information contact:-

Burdekin Visitor Information Centre

Plantation Park, Ayr
Ph: (07) 4783 5988

Burdekin Gateway Information Centre

Old Railway Station, Home Hill
Ph: (07) 4782 8241 Fax: (07) 4782 8281

Email: burdekintourism@bigpond.com

Find us on Facebook: facebook.com/burdekintourism

www.burdekintourism.com.au



BURDEKIN SHIRE COUNCIL

PO Box 974, Ayr Q 4807

w: www.burdekin.qld.gov.au

p: (07) 4783 9800 f: (07) 4783 9999

No warranty given in relation to the data (including accuracy, reliability, completeness or suitability) and no liability accepted (including without limitation, liability in negligence) for any loss, damage or costs (including consequential damage) relating to any use of the data. Data must not be used for direct marketing or be used in breach of the privacy laws. External contributors to data listed at www.nrme.qld.gov.au/products OR www.burdekin.qld.gov.au.

WELCOME TO THE BURDEKIN

Heritage Town Walk

Home Hill



A wonderful place to visit -
A marvellous place to live!



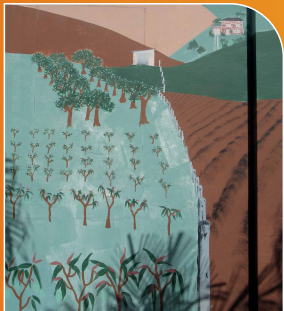
Visitor Information Centre
 The former Home Hill Railway Station was completed around 1916, replacing the wood and canvas tent structure that had served as a temporary station for three years. The Burdekin Shire Council renovated the building in 2006 and the Burdekin Gateway Visitor Information Centre opened for business there on 8th January 2007. The Centre also displays a photographic exhibition on the bridge and other aspects of Burdekin history, prepared by the Lower Burdekin Historical Society.



Comfort Stop
 Opened in 2005 as part of a CBD revitalisation program, this modern facility has free restrooms, parents' room, hot showers, barbecue facilities and undercover tables.



Home Hill Post Office
 The timber/chamfer board post office building was opened on 3rd November 1924. After the 1947 flood, the building was raised above likely flood levels.



Co-operative Mural
 This large mural depicts elements of rural life in the Burdekin, including cane farms, mango orchards and farmhouses. The mural was painted by Ayr artist Margaret Redweik.



Commercial Hotel
 This two-storey brick and timber hotel was built in 1926 by George Mihalides, one of the first Greek businessmen in Home Hill. Mr Mihalides also built some of the adjoining shops. The first publican to lease the Commercial Hotel was William Henry McAllister.



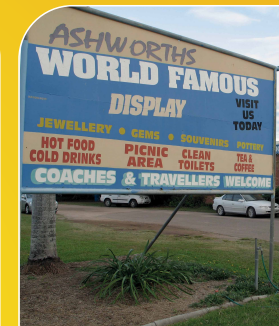
Walk duration about 1 hour



Crown Hotel
 The stone plaque on the front wall of the hotel was laid on 16th June, 1913, making the Crown Hotel one of Home Hill's oldest buildings. Built by the Hayes family, the Crown was the first two-storey structure in the town. On the right side of the ground floor is a room that once served as a TAB but is now a meeting room. The TAB equipment was moved to the bar area.



Old National Bank building
 Built for the National Bank by contractor, Mr Madsen, in 1923 for about £3500 (about \$7000). The solid brick structure served as a bank for many years. It is now a doctor's surgery.



Ashworth's Treasures of the Earth Gallery
 Possibly Home Hill's best-known and longest-established tourist attraction. The brick showroom was completed in 1972 and houses one of the best and biggest displays of agate in the world. There is also a collection of meteor-split rocks, fossils, crystals, opalised wood and other precious stones and metals. The collection was started by the late Len Ashworth about 75 years ago and is now owned by his son, Jim. The site was once a tennis court, then later occupied by Honeycombe's Tractors, Trucks and Farm Machinery until 1971.



Malpass Hotel
 Opened on 8th October 1924, this large two-storey hotel was named after its owner, well-known North Queensland hotelier Joseph Malpass. A stone plaque embedded in the front wall of the hotel names the architect as J. Smith of Ayr and the building contractor as Joseph Tickle of Ayr. The bricks used in the building were made locally at Gardiner's Lagoon. The building underwent extensive repairs following Cyclone Aivu in 1989, which tore off parts of the verandah and much of the roof. Behind the hotel where Home Hill Engineering now stands, was once the Malpass Hall which was used for meetings and silent pictures.

